



ANIMAL EVAC.NZ
KARAREHE WHAKAWATEA
Evacuate | Shelter | Reunite

RECOMMENDED PPE Flood Operations



With over 70% of declared civil defence emergencies involving flooding, it is fair to say you are likely to be deployed to such events. In addition to doing our Flood Worker Safety (FWS) course, you should have access to PPE for the initial response if you are wanting to be part of the field rescue activities. Having this equipment ready will help us put the right people, with the right equipment out to perform rescues in a more timely manner.

Recommended Personal Protective Equipment

Item	Notes	Suggested Supplier & Cost Estimate
PVC Fishing Chest Waders	Or dry/wet suit (2.5mm full length)	Save Barn \$60
Helmet	Petzl Vertex Vent Red	NZ Safety \$155
Personal Floatation Device	RFD Briza Red	Paddler Zone \$99
Long Sleeve Rash Top	Black	Warehouse \$60
Rescue throwline	20m (Burnsco Ref UPC: 35691)	Burnsco \$49
Waterproof headlamp	Black diamond storm (black)	Gear Shop \$100
Whistle	Fox 40 (water proof)	Paddler Zone \$16 (or Ali-Express)
Wading pole	Any long wooden or aluminium pole	Local hardware store (>\$10)
Dive/water gloves	Any full length gloves for handling debris	Dive shops/hardware stores (>\$30)
Safety goggles	NZ Safety # 253456	NZ Safety \$45

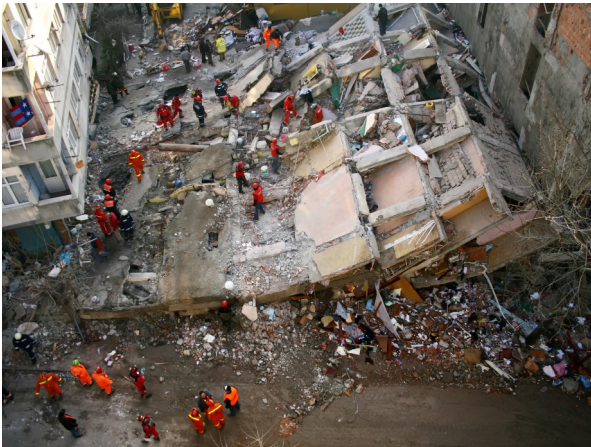
What else could I offer to bring that could help?

- Animal equipment: muzzles, leads, catch poles, carriers/cages, nets
- Dinghy or inflatable boat
- Portable showers for decontamination
- Building entry and repair tools including bolt-cutters



ANIMAL EVAC.NZ
KARAREHE WHAKAWATEA
Evacuate | Shelter | Reunite

RECOMMENDED PPE USAR Operations



From the Christchurch earthquake to the Edgecumbe Flood, both these events required animal rescuers to apply Urban Search & Rescue (USAR) protocols. In addition to doing our USAR Awareness (CAT1A) course, you should have access to PPE for the initial response if you are wanting to be part of the field rescue activities. Having this equipment ready will help us put the right people, with the right equipment out to perform rescues in a more timely manner.

Recommended Personal Protective Equipment

Item	Notes	Suggested Supplier & Cost Estimate
Helmet	Petzl Vertex Vent Red	NZ Safety \$155
Safety boots (not shoes)	Black	Any safety or hardware store
Cargo pants	Black	NZ Safety/Warehouse
Long sleeve cotton T-Shirt	Black (in addition to Red AENZ shirt)	Warehouse
Animal Evac NZ High Vis Vest	Fluro Yellow	Animal Evac NZ (as issued/purchased)
Whistle	Fox 40 (water proof)	Paddler Zone \$16 (or Ali-Express)
Dust mask (several)	P1/P2 respirator with exhalation valve	NZ Safety (\$5 each)
Safety goggles	NZ Safety # 253456	NZ Safety \$45
Debris/rigging gloves	Leather (G3 NZ Safety) or synthetic	NZ Safety \$80
PRS/UHF CB radio	Uniden UH044 or XCD	JB HiFi \$30 each
Ear plugs	Re-usable, corded with case	NZ Safety \$5
Waterproof headlamp	Black diamond storm (black)	Gear Shop \$100

What else could I offer to bring that could help?

- Animal handling equipment: catch poles, cages/pet carriers, muzzles, leads, nets etc
- Chalk, builders crayon, spray paint.
- Building entry and repair tools including bolt-cutters, hammer, nails etc
- Spare water, generators, spare batteries, tents etc